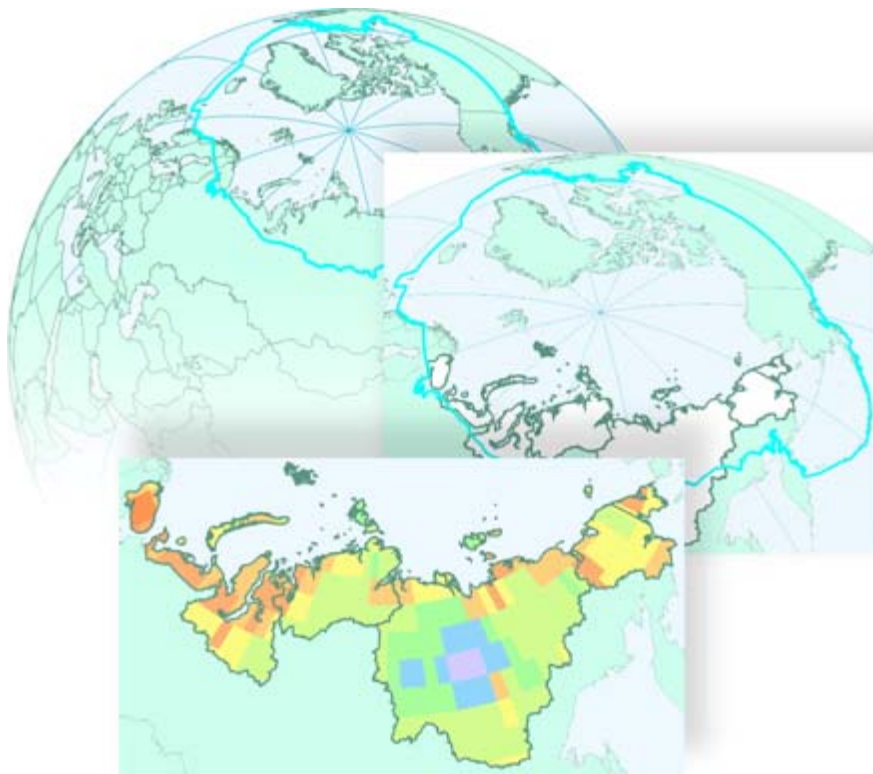


**GEF project “Persistent Toxic Substances, Food Security and
Indigenous Peoples of the Russian North”**

Activity 3

***Assessment of long-range transport of
Hg, PCBs and γ -HCH to the Russian North***

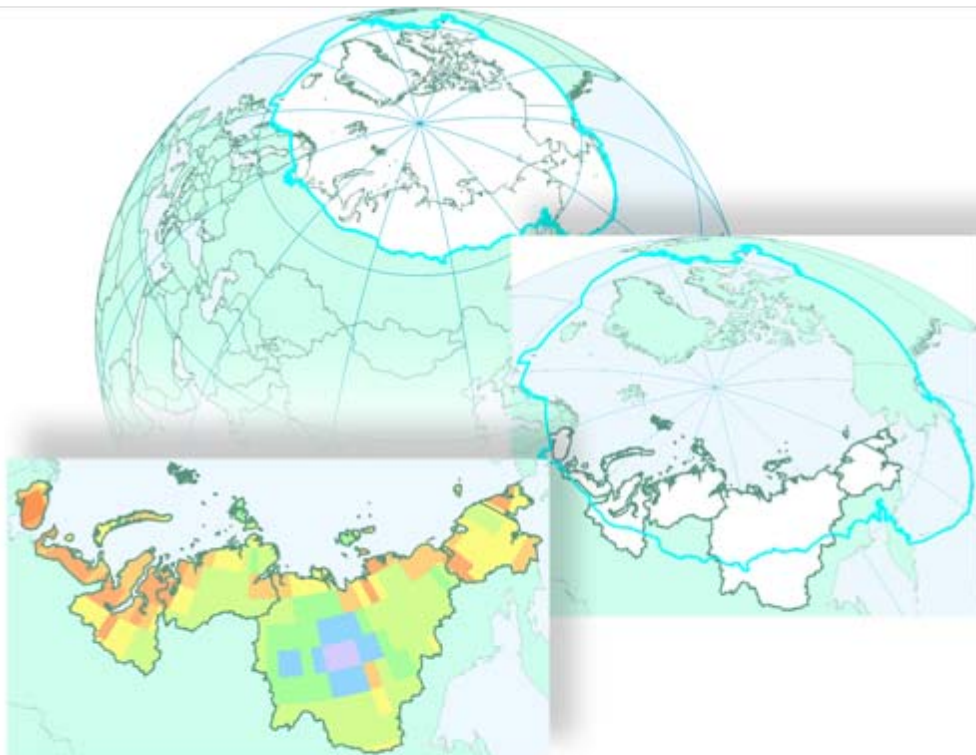


**EMEP/MSC-E Technical Report
for Arctic Monitoring and Assessment Programme
AMAP**

**GEF project “Persistent Toxic Substances, Food Security and
Indigenous Peoples of the Russian North”**

Activity 3

***Assessment of long-range transport of
Hg, PCBs and γ -HCH to the Russian North***



**EMEP/MSC-E Technical Report
for Arctic Monitoring and Assessment Programme
AMAP**